



Over 50 years successfully serving laboratories with innovative gas control equipment

Laboratory Gas Control Equipment

About NTC

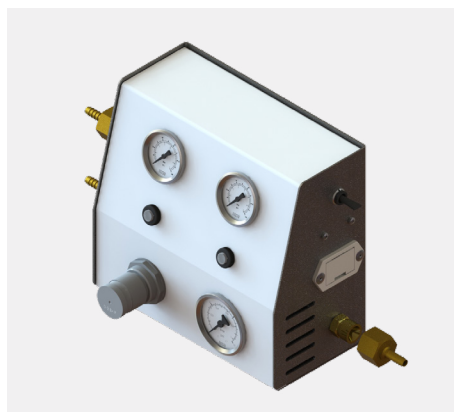
In 1973 NTC Services introduced their first automatic gas cylinder changeover unit for use with CO₂ incubators in Tissue Culture, IVF and Microbiology laboratories. Since that date our Pneuchange units have become the best selling gas bottle changeover equipment for these applications. This equipment is recommended and sold by most of Europe's incubator manufacturers as a result of which there are currently in excess of ten thousand of these units in round the clock use.

NTC has become a major player in the gas control and handling market and now presents its range, manufactured to the highest quality standards and guaranteed for 12 months.

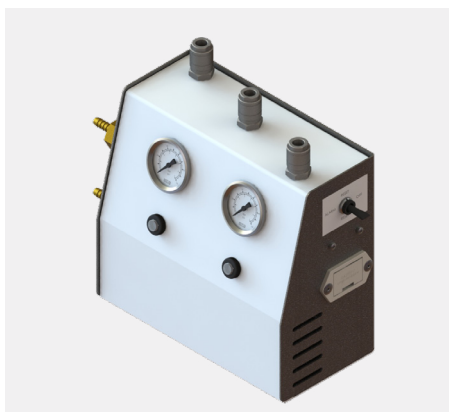
Our range of gas control equipment is used by:

Chemists, Biochemists, Physicists, Biologists, Biotechnologists, Microbiologists, Embryologists, Pathologists & Engineers.

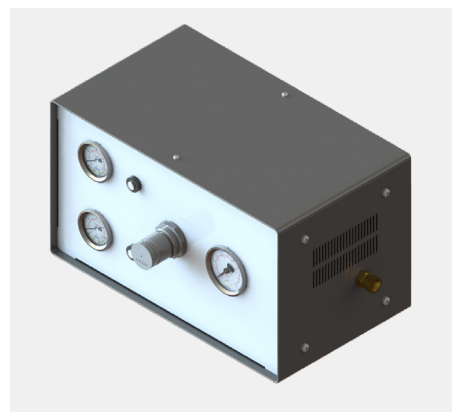
Units & Regulators



PC Series



Pneuchange Trio



Chromachange

PC Series - Pneuchange Mk3

Pneuchange is the unit of choice in thousands of laboratories for ensuring the continuity of CO₂ and other inert gases supplied to CO₂ incubators and other equipment where loss of gas would be inconvenient, costly or dangerous. These compact units can be bench or wall mounted using the keyholes on the back of the unit. Full installation instructions are included.

The unique pneumatic logic construction of Pneuchange means that it can be placed anywhere between the gas bottles and the equipment being served, no electrical supplies are involved.

These units are suitable for use with all non-corrosive, non flammable gases. The inlet ports are connected with suitable tubing to the gas bottle regulators. Two pressure gauges indicate the inlet pressures and two coloured indicators show which cylinder is active.

On exhaustion of the active bottle, the unit switches automatically to the second bottle. The empty cylinder can

be replaced at leisure and without fear of loss of gas from the disconnected regulator or inlet port. An audible battery operated changeover alarm is fitted. Max inlet 100 PSI. Min. inlet 30 PSI.

Standard port fittings are 3/8" BSP male and are supplied with (6mm) hosetail fittings for 6mm OD tube, as used on some European incubators and other hosetail sizes are also available.

How to order:

NTC PC15	Outlet pressure range 0-15 PSI
NTC PC30	Outlet pressure range 0-30 PSI
NTC PC60	Outlet pressure range 0-60 PSI
NTC PC100	Outlet pressure range 0-100 PSI

Please note: Add VFC suffix for volt free contacts option to allow connectivity to remote alarm system instead of integral buzzer.

Pneuchange Trio - PC Mk3 Variants

This unit has three outlets into which special Outlet Pressure Modules (OPMs) can be plugged. The modules consist of a pressure regulator and gauge. Using these OPMs, up to three incubators can be served at the same or different pressures.

PC-Trio is supplied without OPMs. Additional modules can be supplied at the same time or later. The OPM ports are

self-sealing and on removal of the OPM will completely isolate the incubator from the gas supply.

How to order:

NTC PCTRIO PC - Trio base unit

Chromachange CC100

Chromachange was developed to meet the needs of Chromatographers and other laboratory workers requiring a reliable, compact device for maintaining continuity of gas supplies to GCs, ICPs and other gas dependent equipment. Unlike large industrial changeover systems, CHROMACHANGE is a self-contained, non-electrical automatic device, requiring no resetting after cylinder change.

The specially developed valve system requires inlet gas pressures of 100 PSI (7 BAR) and hence the gas cylinders must be fitted with reliable gas regulators. Changeover takes place when the gas cylinder empties and the outlet pressure falls to 70% of the original value. It is recommended that inlet pressures should be maintained at 100 PSI.

The outlet pressure regulator and gauge allow the pressure to your equipment to be set at any value up to that of the inlet pressure. The status of the feed cylinders is indicated

on the inlet pressure gauges and the currently active (on-line) cylinder is indicated by coloured indicators. Gas ports are $\frac{3}{8}$ " BSP male (as fitted on UK cylinder regulators).

Chromachange is suitable for all non-corrosive, non-flammable gases only. All units can be bench or wall mounted. Preset, fixed output cylinder regulators are available and are recommended for use with this equipment. A range of optional equipment is available including battery operated changeover alarms and remote indicator panels. Our technical department is always ready to discuss and advise on your particular requirements.

How to order:

NTC CC100 Chromachange

Outlet Pressure Modules (OPM)

How to order:

NTC OPM 35
NTC OPM 100

OPM with 0-35 PSI gauge
OPM with 0-100 PSI gauge

N.B Pneuchange units are not suitable for Gas Chromatography



Gas Cylinder Regulators

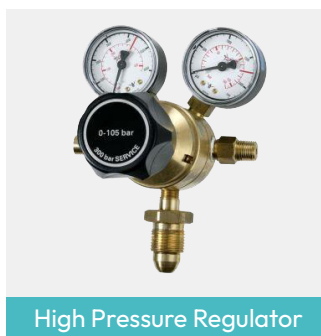
We can supply a full range of gas cylinder regulators for all laboratory gases. Our prices are some of the most competitive on the market and many models can be supplied from stock. All regulators are made to the highest international quality standards and are guaranteed for 12 months.

Try us first for your next regulator purchase

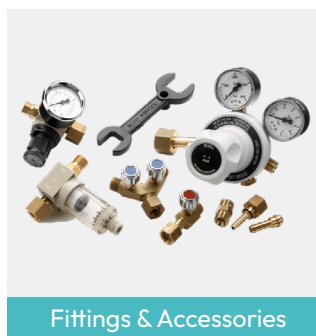
Other Available Products



CO₂ Regulator



High Pressure Regulator



Fittings & Accessories



High Purity Regulator

Multistage Regulators

These regulators are normally chosen for laboratory use and are designed to minimise outlet pressure fluctuation. The first stage automatically reduces cylinder pressure to 17 Bar. The second stage is adjustable, resulting in overall sensitive accurate control. Regulators for 0-4 Bar and 0-10 Bar are available for all non-corrosive gases.

Single Stage Regulators

Single-stage regulators are useful where precise settings over a period are not essential.

High Purity Regulators

High purity regulators are intended for critical applications with high purity gases. These regulators employ stainless steel diaphragms and PTFE seals fitted throughout. These regulators are an economic alternative to all stainless steel units.

High Pressure Regulators

Available for maximum operating pressures of 12, 28, 41 and 172 Bar.

Fittings & Accessories

Hosetails, single, twin and triple outlet regulator valves, 'Swagelok' regulator adaptors, flexible stainless steel braided hoses, flashback arrestors, line filters, gas cylinder wall brackets, tubing etc.

Gas Cylinder Couplers

For one, two or three gas cylinders, wall mounted or cylinder mounted. The capacity of our Pneuchange and Chromachange units can be increased by using these couplers.

Industrial Cylinder Manifold

For a high purity gas installation we can supply manual or automatic gas cylinder changeover units with optional remote alarm units.

Custom Built Equipment

A large part of our business is the design and construction of laboratory gas control equipment to customer specification. Our customer list includes international pharmaceutical companies, research institutes and government agencies.



WolfLabs

Pricing on any accessories shown can be found by keying the part number into the search box on our website.

The specifications listed in this brochure are subject to change by the manufacturer and therefore cannot be guaranteed to be correct. If there are aspects of the specification that must be guaranteed, please provide these to our sales team so that details can be confirmed.

www.wolflabs.co.uk

Tel : 01759 301142

Fax : 01759 301143

sales@wolflabs.co.uk

Please contact us if this literature doesn't answer all your questions.